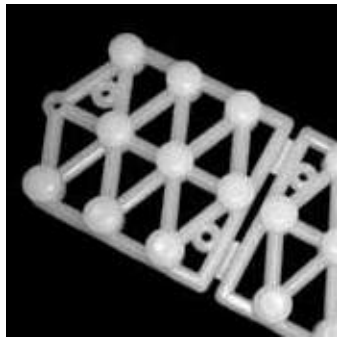


WWW.CARNIECAP.COM  
888.743.7725

# CARNIE CAP™





# CARNIE CAP

These unique rebar caps hold a 2x4 or 2x6 suspended above a line of rebar, eliminating the need to cap each rebar in a line. The lumber acts as the actual impalement protection. Can be used in horizontal, vertical and incline applications. The caps are Cal-OSHA approved, Maine OSHA approved and National OSHA compliant. 90% biodegradable and 100% recyclable.

Part No.	Lumber	Rebar No.	Qty/Ctn
CC-100 2x4 Carnie	2x4"	#4-9	100
CC-200 2x6 Carnie	2x6"	#7-18	100

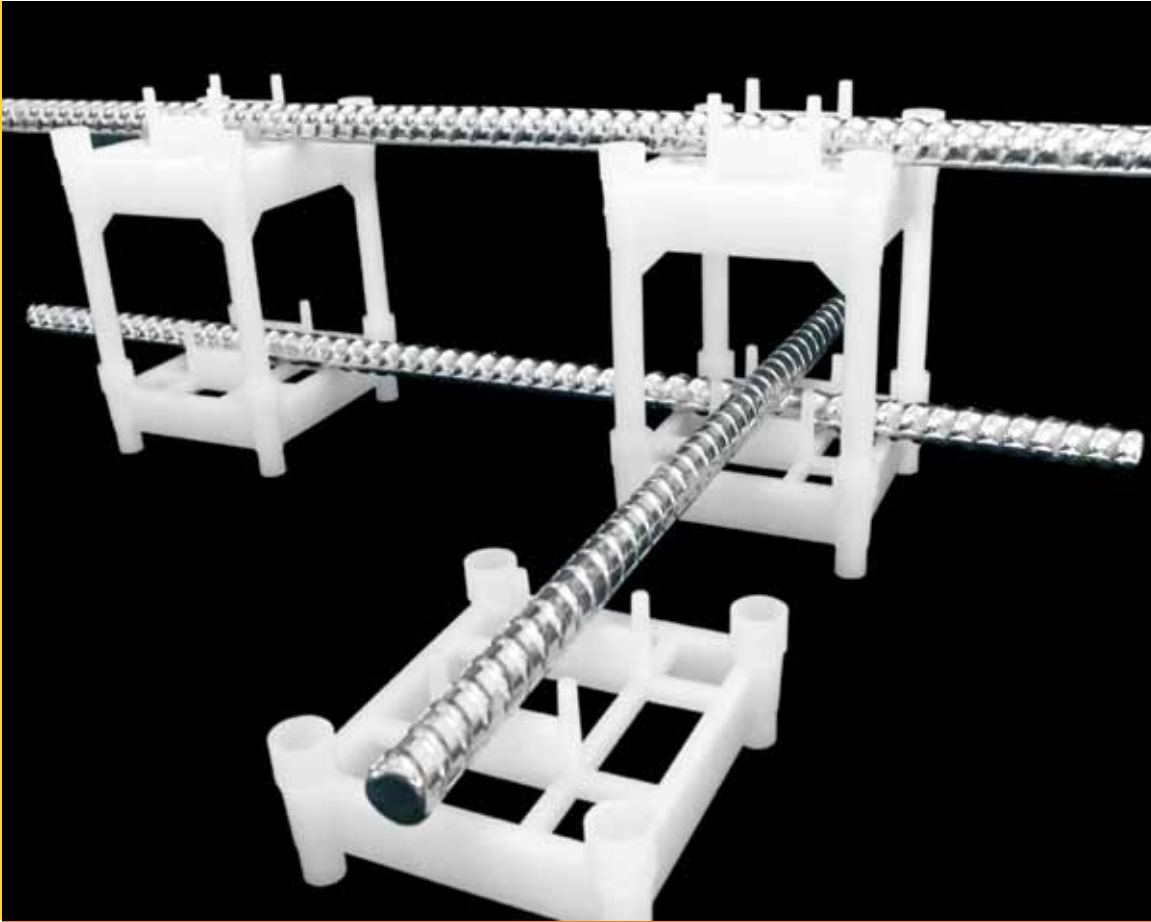


**PLACE YOUR ORDER**

**888.743.7725**

[www.carniecap.com](http://www.carniecap.com)





# CAGED CHAIRS

Sturdy, wide-based support to accommodate a wide range of rebar and mesh reinforcements. Units are stackable to any ½" increment over 3 ½". Durable, lightweight, non-corrosive polypropylene construction.

Part No.	Height	Rebar No.	Qty/Ctn
CC100-150	1 ½"	ALL	140
CC100-200	2"	ALL	140
CC100-300	3"	ALL	120
CC100-400	4"	ALL	120

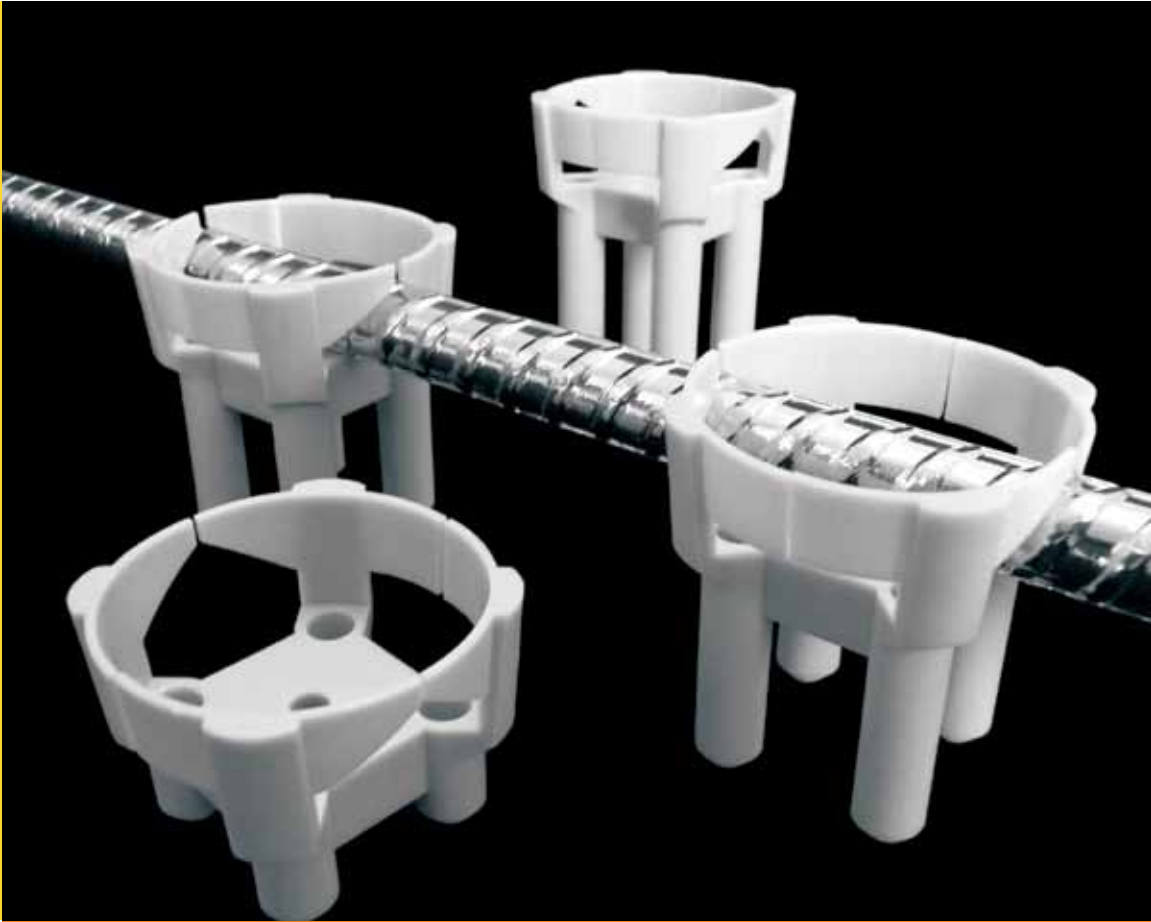


PLACE YOUR ORDER

888.743.7725

[www.carniecap.com](http://www.carniecap.com)





# ARCHITECTURAL CHAIRS

Architectural chairs lock rebar and mesh into position while concrete is poured. Fine points at each leg base insures minimal visibility in final product. Units are stackable to any ¼" increment over 1 ½". Chairs remain in position even when assembly is moved. Composed of durable, lightweight, non-corrosive polypropylene.

Part No.	Height	Rebar No.	Qty/Ctn
AC300-075	¾"	Mesh - #5	500
AC300-100	1"	Mesh - #5	350
AC300-150	1 ½"	Mesh - #5	250
AC300-200	2"	Mesh - #5	250

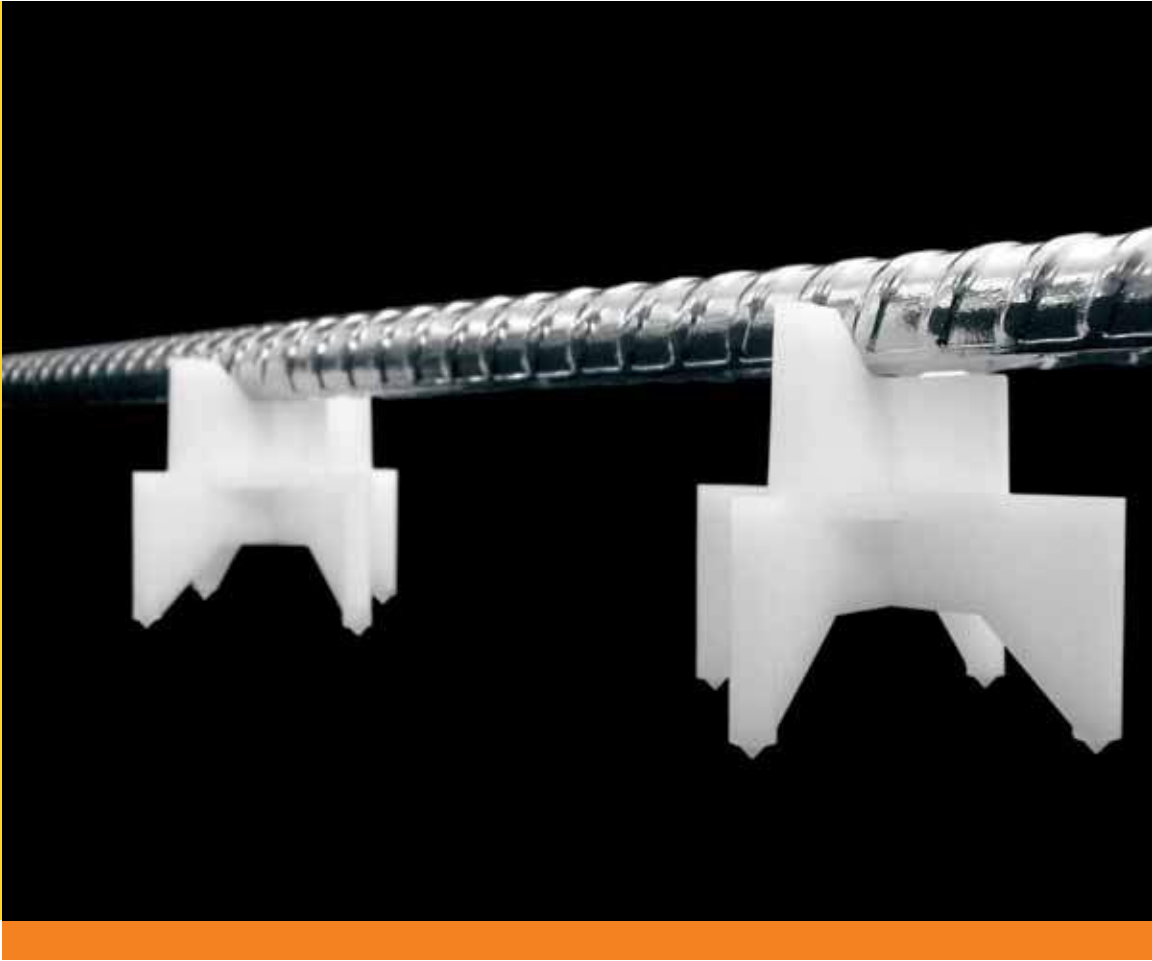


PLACE YOUR ORDER

888.743.7725

www.carniecap.com





# EXPOSED AGGREGATE CHAIRS

Used to support rebar or mesh in exposed aggregate and sand-blasted concrete. Fine points at leg base insure minimal visibility in the surface of your final product. Durable, lightweight, non-corrosive polypropylene construction.

Part No.	Height	Rebar No.	Qty/Ctn
RC100-100	1"	ALL	700
RC100-150	1 ½"	ALL	500
RC100-200	2"	ALL	450

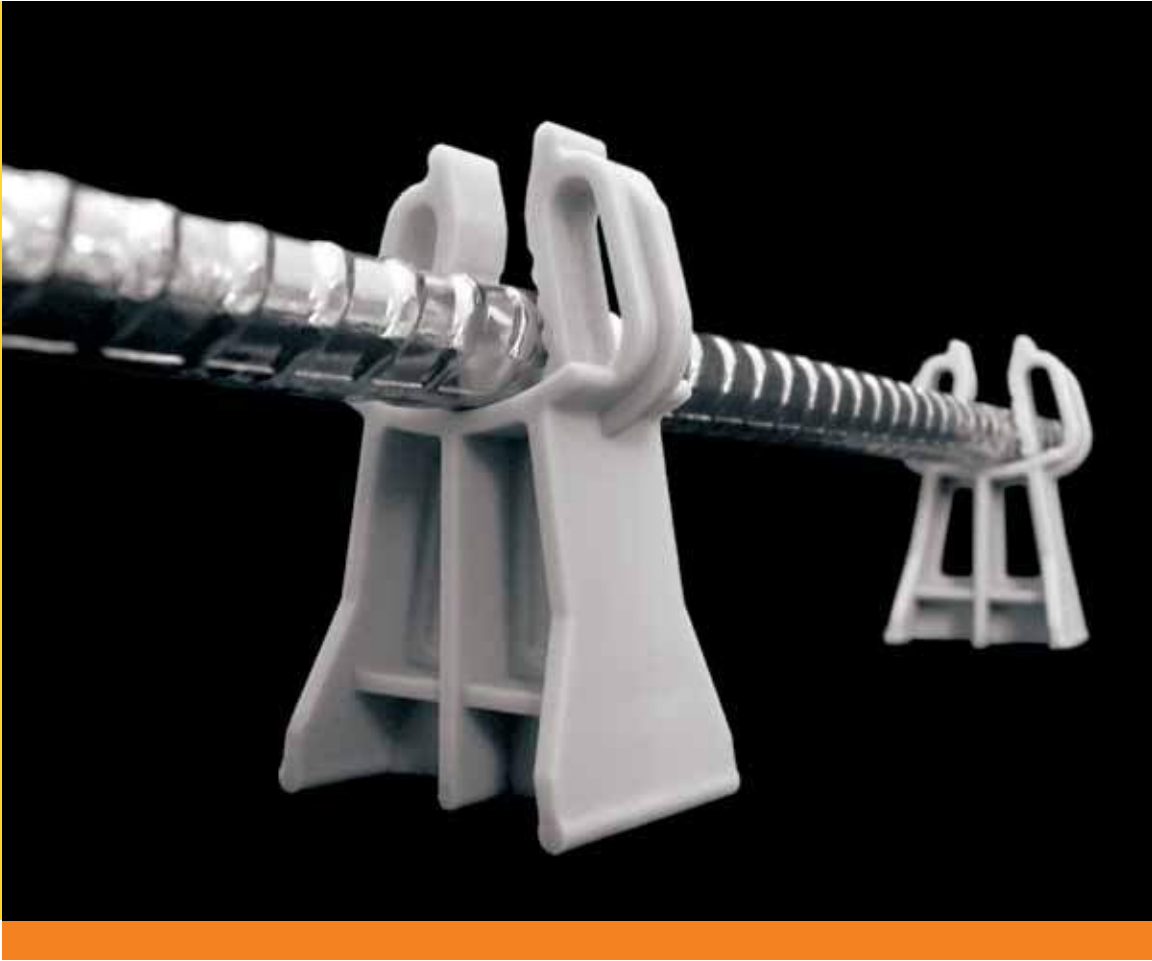


PLACE YOUR ORDER

888.743.7725

[www.carniecap.com](http://www.carniecap.com)





# SNAP REBAR CHAIRS

Wide-based chair designed to lock rebar and mesh into place, and provide support while concrete is poured. Snap feature allows chairs to remain in position even when assembled rebar/mesh needs to be moved. Durable, lightweight, non-corrosive polypropylene construction.

Part No.	Height	Rebar No.	Qty/Ctn
SRC300-100	1"	Mesh - #5	500
SRC300-150	1 ½"	Mesh - #5	250
SRC300-200	2"	Mesh - #5	250



PLACE YOUR ORDER

888.743.7725

[www.carniecap.com](http://www.carniecap.com)





# REBAR CLIPS

Horizontal supports for standard rebar sizes, eliminating the need to wire-tie reinforcements. Snap feature allows chairs to remain in position even when assembled rebar/mesh needs to be moved. Durable, lightweight, non-corrosive polypropylene construction.

Part No.	Height	Rebar No.	Qty/Ctn
RCL300-100	1"	#3 – 5	1500
RCL300-150	1 ½"	#3 – 5	750
RCL300-200	2"	#3 – 5	600

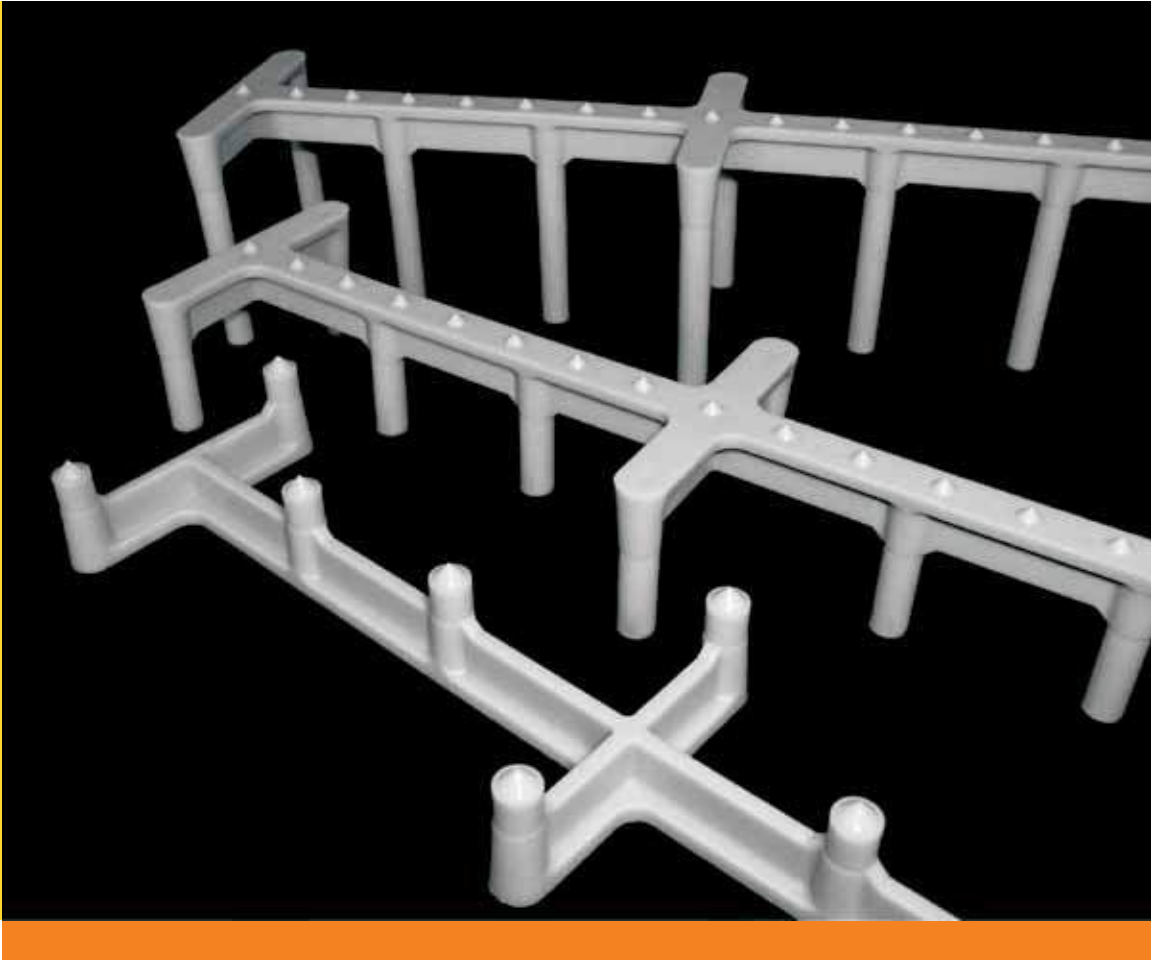


**PLACE YOUR ORDER**

**888.743.7725**

[www.carniecap.com](http://www.carniecap.com)





# BOLSTER SLAB CHAIRS

Continuous rebar or mesh support. Fine points at each leg base insure minimal visibility in final poured product. Durable, lightweight, non-corrosive polypropylene. Reinforced bolster slab chairs are also available for added strength. Parts available in white, grey, tan or black.

Part No.	Height	Length	Qty/Ctn
BC300-075	¾"	20"	210
BC300-100	1"	20"	170
BC300-150	1 ½"	20"	130
BC300-200	2"	20"	100
BC300-250	2 ½"	20"	80



**PLACE YOUR ORDER**

**888.743.7725**

[www.carniecap.com](http://www.carniecap.com)







# WHEEL SPACER

Guarantees equal spacing of reinforcements in concrete columns, piles, walls and slabs. Durable, lightweight, non-corrosive polypropylene construction.

Part No.	Concrete Cover (in.)	Rebar No.	Diameter	Qty/Ctn
WS300-150	1 ½"	#3 - 6	3 ½"	200

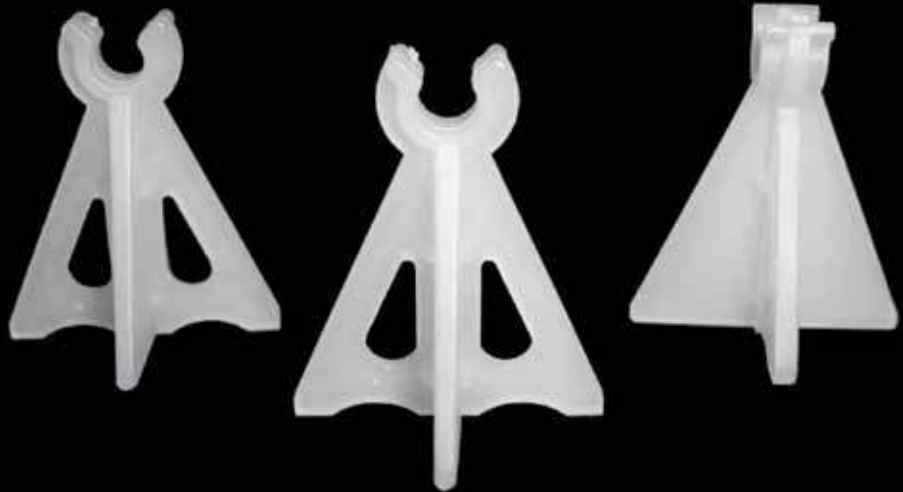


**PLACE YOUR ORDER**

**888.743.7725**

[www.carniecap.com](http://www.carniecap.com)





# MESH CLIPS

Horizontal supports for standard mesh sizes, eliminating the need to wire-tie reinforcements. Snap-on design allows mesh or clips to be moved quickly and easily. Durable, lightweight, non-corrosive polypropylene construction.

Part No.	Height	Mesh No.	Qty/Ctn
MC100-100	1"	#4 - 5	2500



**PLACE YOUR ORDER**  
**888.743.7725**  
[www.carniecap.com](http://www.carniecap.com)





# 6" BOX GIRDER

Plastic supports used to hold insulating foam in place while pouring concrete. Durable, lightweight, non-corrosive polypropylene construction.

Part No.	Height	Length	Qty/Ctn
BG100-600	6"	11 3/4"	24



**PLACE YOUR ORDER**

**888.743.7725**

[www.carniecap.com](http://www.carniecap.com)





# H BRACKET

H-bracket inserts support pre-stressed cable within double tee forms. Durable, lightweight, non-corrosive, polypropylene construction.

Part No.	Height	Qty/Ctn
HB300-000	3"	500



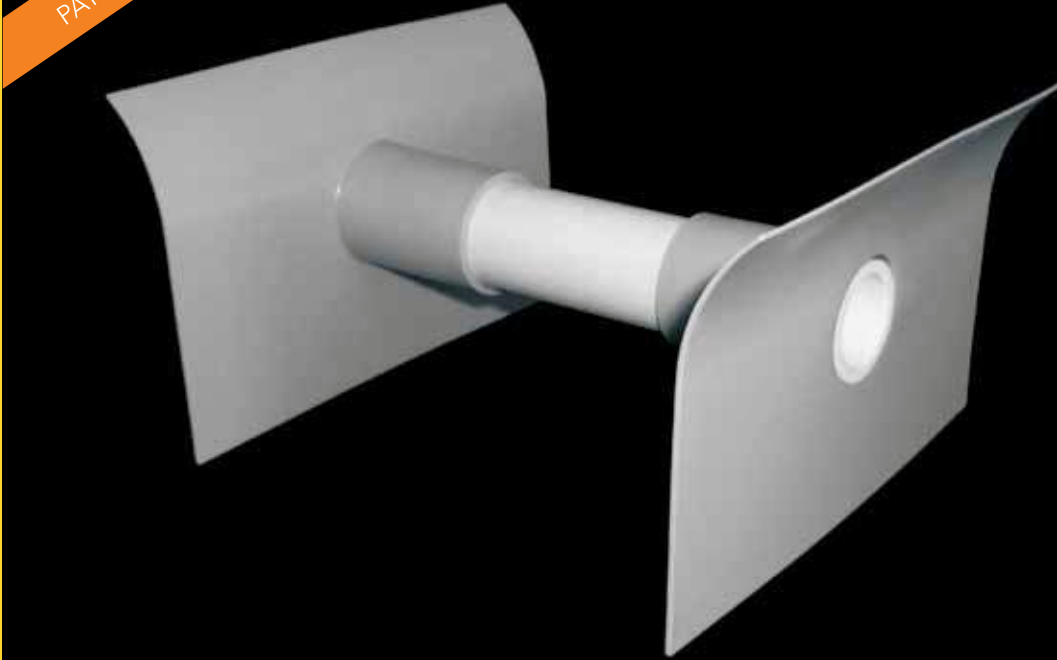
**PLACE YOUR ORDER**

**888.743.7725**

[www.carniecap.com](http://www.carniecap.com)



PATENT PENDING



DOUBLE TEE ACCESSORIES

## ROUND BLOCKOUT PLATE

Paired with piping, the round blockout plate can create a channel of any length in pre-cast double tees. Typically used to run plumbing and cables through heavy concrete pours. Durable, lightweight, non-corrosive polypropylene construction.

Part No.	Height	Width	Qty/Ctn
RBP300-100	4 ¼"	6 ¾"	140

**CARNIECAP™**

PLACE YOUR ORDER

888.743.7725

[www.carniecap.com](http://www.carniecap.com)





# DOUBLE TEE BLOCKOUT

Creates an opening in pre-cast double tees for running plumbing and cables.  
Durable, lightweight, non-corrosive polypropylene construction.

Part No.	Height	Width	Length	Qty/Ctn
DTB300-675	3 ¼"	6"	6 ¾"	24
DTV100-575	3 ¼"	6"	5 ¾"	24



**PLACE YOUR ORDER**

**888.743.7725**

[www.carniecap.com](http://www.carniecap.com)



PATENT PENDING



MISCELLANEOUS SUPPLIES

# FOUNDATION PLATE BLOCKOUT

The foundation plate blockout is used to create uniform cavities in pre-fabricated concrete. Pair with its male counter-part for simple, accurate alignment of poured slabs. Durable, lightweight, non-corrosive, polypropylene construction.

Part No.	Height	Width	Depth	Qty/Ctn
DH300-000	2.95"	4.875"	6.6"	30

**CARNIECAP™**

**PLACE YOUR ORDER**

**888.743.7725**

[www.carniecap.com](http://www.carniecap.com)



PATENT PENDING



MISCELLANEOUS SUPPLIES

# COIL PROTECTOR

The coil protector prevents concrete from filling the coils during a pour. Re-engineered for high durability and specially coated, this unique component will save hours on every job. A proprietary blend of polypropylene gives it extra strength making removal easy and drastically reducing breakage.

Accompanying extraction tool snugly fits any 3/4" wrench.  
Extraction tool ships free with initial purchase, and may be purchased separately.  
(Coil Protector intended for single-use only.)

Part No.	Diameter	Head	Length	Qty/Ctn
CP520-050	1/2"	2"	2 1/4"	300
CP520-075	3/4"	2"	3 1/4"	225
CP520-100	1"	2"	4 1/4"	125
CPT620-000 (Extraction Tool)	N/A	2"	N/A	1

**CARNIECAP™**

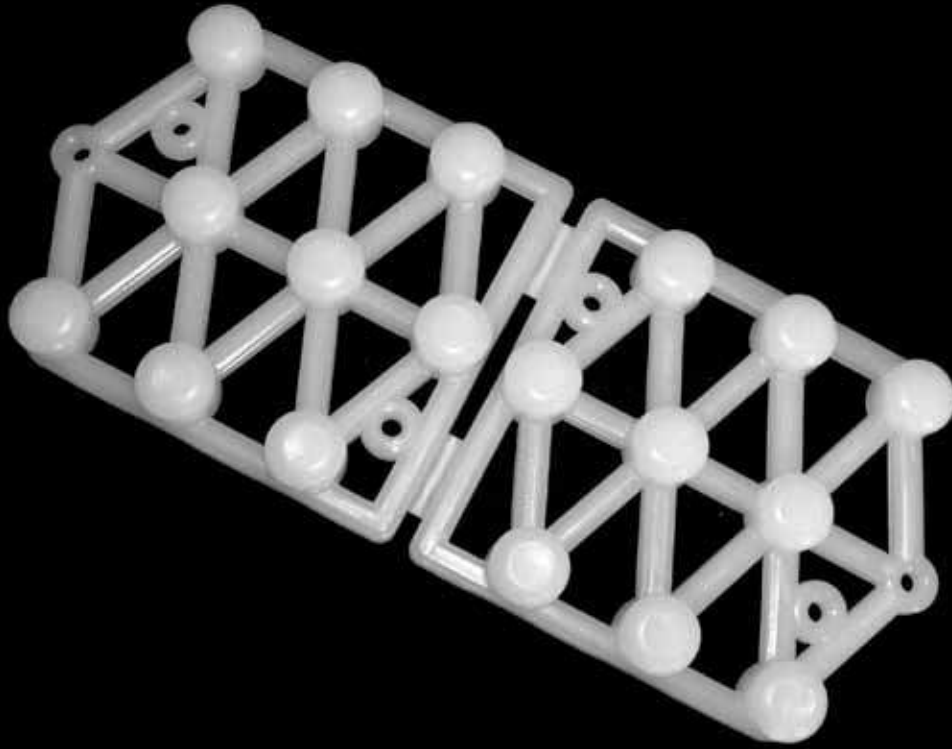
**PLACE YOUR ORDER**

**888.743.7725**

[www.carniecap.com](http://www.carniecap.com)







# PROTECTIVE BUBBLE PADS

Durable, lightweight, plastic bubble pads insure safe transport and storage of pre-cast concrete. Prevents cracking, chipping and discoloration. Unit may be folded over for greater clearance, or divided in two for additional coverage.  
Available in rigid or non-rigid plastics.

Part No.		Height	Length	Qty/Ctn
BP-110-000	(Non-rigid)	3/8"	6"	250
BP-100-000	(Rigid)	3/8"	6"	250



**PLACE YOUR ORDER**

**888.743.7725**

[www.carniecap.com](http://www.carniecap.com)





# QUALITY CLIPS

Quality clips are used to pin back loose flaps while packing parts into boxes. Removable and reusable, these clips won't mark or leave residue on your packaging. Maximize valuable workspace by preventing workers from having to lean, reach and block walkways.

Custom colors and printing available, minimum order required.

Part No.	Height	Width	Qty/Ctn
Quality Clip	3 1/2"	1 1/4"	100

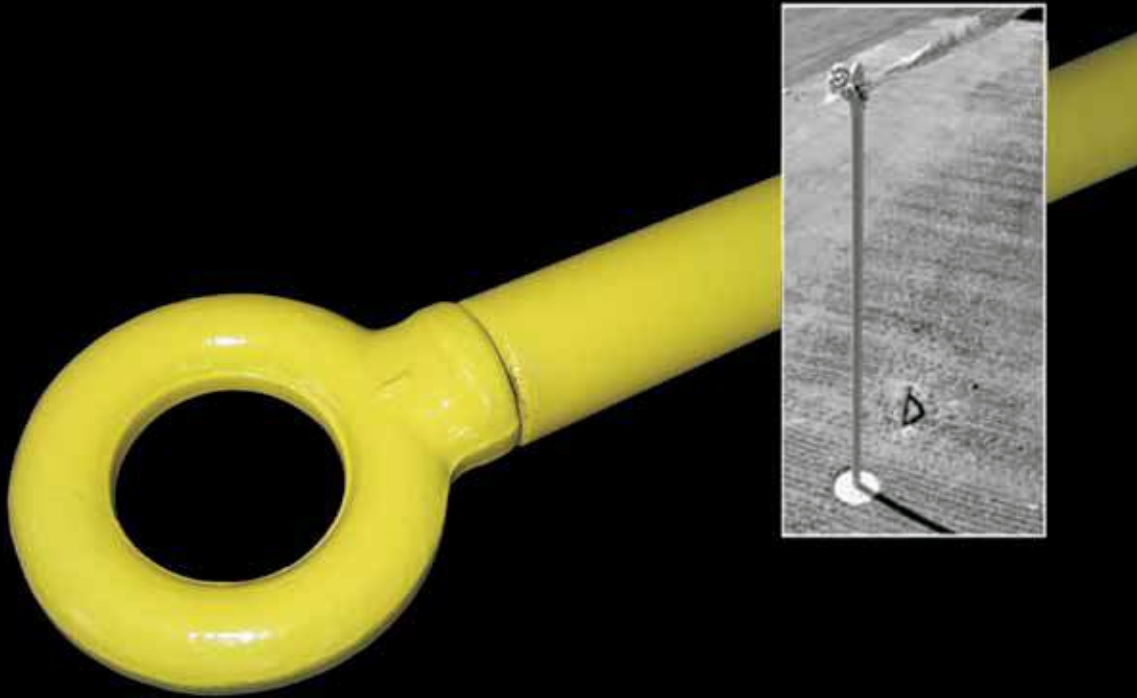


**PLACE YOUR ORDER**

**888.743.7725**

[www.carniecap.com](http://www.carniecap.com)





# SAFETY STANCHION

Vertical safety stanchion for use with Stanchion Holder (part no. SH100-600).  
Sturdy, yellow powder-coated aluminum rod with galvanized eyebolt.  
Designed to provide a temporary safety barrier at the worksite.

Part No.	Height	Eyelet Diameter	Stanchion No.	Qty/Ctn
SS490-000	47 3/4"	1 1/4"	1"	250



**PLACE YOUR ORDER**

**888.743.7725**

[www.carniecap.com](http://www.carniecap.com)





# SAFETY STANCHION HOLDER

Concrete poured around part to provide vertical support for safety stanchions. Durable, non-corrosive, polypropylene construction. Produced in safety yellow for easy visibility.

Part No.	Height	Stanchion No.	Qty/Ctn
SH400-600	6"	1"	108



**PLACE YOUR ORDER**

**888.743.7725**

[www.carniecap.com](http://www.carniecap.com)





**CARNIECAP™**

[WWW.CARNIECAP.COM](http://WWW.CARNIECAP.COM)