

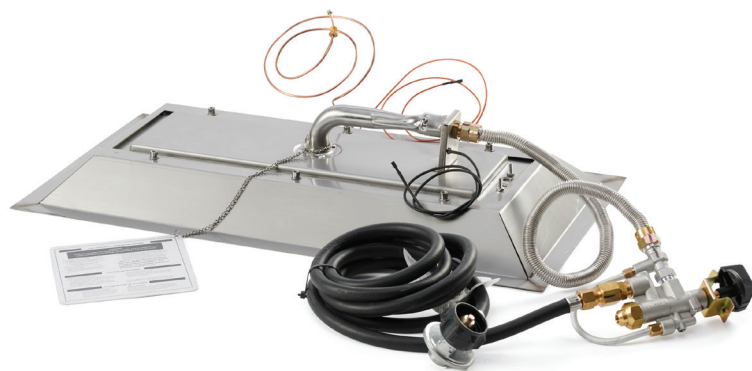
Crystal Fire^{PLUS}

Patent pending burner technology to build the perfect fire. The Outdoor GreatRoom Company offers 22+ stocked Crystal Fire® Plus burners plus custom options. All burners are UL & ULC listed and tested for safety and quality. Crystal Fire® Plus burners are included with every OGC fire pit table and can be purchased separately for custom-built fire pits and installations. Visit CrystalFirePlus.com for more information.



THE OUTDOOR
GREATROOM
COMPANY

Crystal Fire^{PLUS} burners & burner inserts



Crystal Fire® Plus burners and burner inserts are made from commercial grade #304 stainless steel and include a Variable Control Safety Valve, control panel, and clear tempered fire glass gems. All Crystal Fire® Plus burners and burner inserts are UL and ULC Listed to ANSI Z21.97-2017/CSA 2.41-2017 standard.

Crystal Fire® Plus burners and burner inserts have a higher BTU capacity and upgraded burner construction for a brighter, taller, fuller, more yellow flame. The pan burner design produces a more natural looking flame. Raised and extruded burner ports protect the burner from rain or water. Water safely drains from the perimeter of the pitched burner surface and out the perimeter of the pan.

Find videos and more information at CrystalFirePlus.com.

- Provides “Positive Connect” user experience, meaning minimal gas connections and quick installation time
- All connections made in factory with Flex Line, LP Hose & Regulator, and Variable Control Safety Valve pre-connected
- Controlled by a Variable Control Safety Valve with safety ignition and safety shutdown operations
- If flame is not sensed for any reason, the flow of gas to the burner will safely shut down
- Come set up for connection to liquid propane but can be field-converted to natural gas. Linear burners 64” in length and up come set up for natural gas, but can be converted to liquid propane if specified at time of order
- Fully adjustable flame height
- Glass wind guard highly recommended to enhance flame and protect surrounding finishes
- 3 finishes: Stainless Steel, Dora Brown, & Black
- Ventilation required for field-installed burner enclosures
- Installation should be completed by a certified gas technician
- Patent Pending
- UL & ULC Listed
- Limited lifetime warranty on Stainless Steel
- One year warranty on ignition controls



**ADJUSTABLE
FLAME**



**SAFETY
IGNITION &
SHUTDOWN**



**POSITIVE
CONNECT**



**SAFETY
TESTED**



**#304
STAINLESS
STEEL**



**OUTDOOR
RATED
CONSTRUCTION**



**LIMITED
LIFETIME
WARRANTY**

controls & ignitions

VARIABLE CONTROL SAFETY VALVE SYSTEM



- Included with every standard Crystal Fire® Plus burner and fire table
- If flame is not sensed for any reason, the flow of gas to the burner will safely shut down
- Adjustable flame operation
- Powder-coated panel with Black plastic knob and sparker
- For liquid propane or natural gas
- Gas key optional
- 6.375" H x 3.5" W

DIRECT SPARK IGNITION (DSI) SYSTEM



- On/Off operation
- Flame can be automatically ignited with a single control either on the unit or nearby surface
- If flame is not sensed for any reason, the flow of gas to the burner will safely shut down
- DSI System comes set up to run on 110V, battery operation optional (CF-DSI-BP), remote optional (CF-DSI-R)
- Wall switch operation optional, must order additional Switch Bypass (CF-DSI-SB.) Eliminates remote capability.
- Not field-convertible and cannot be retro-fitted.
- Order specific for liquid propane or natural gas
- Black powder-coated control panel is 6.375" H x 6.375" W
- If you are seeking a DSI system for commercial application, check out our commercial burner packages which includes additional commercial safety features

4 HOUR TIMER



- Four hour timer
- Timer replaces controls for DSI System
- Timer is built into control panel
- Black powder-coated panel with White knob
- 6.375" H x 3.5" W

4HRTC

DIY CONTROL PANELS



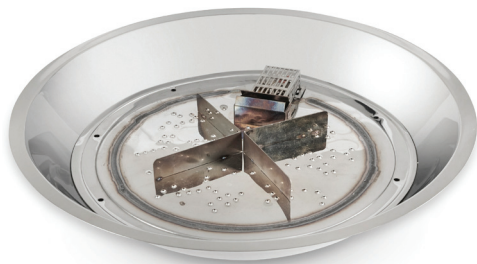
VCSV-DIY-CP



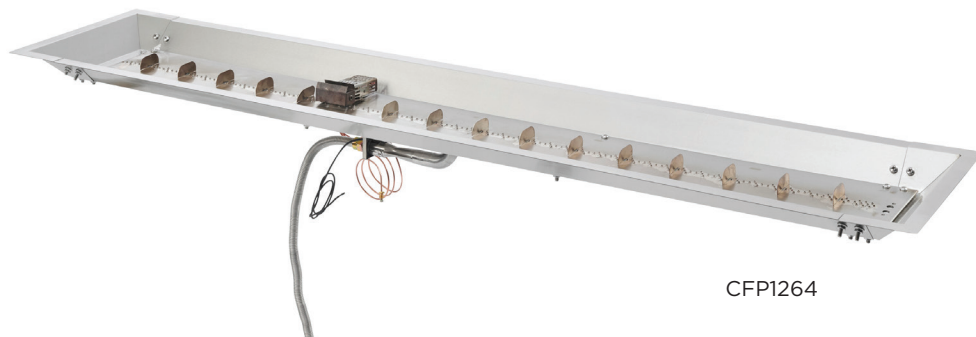
DSI-DIY-CP

- Order for use with Variable Control Safety Valve (VCSV-DIY-CP) or Direct Spark Ignition (DSI-DIY-CP)
- For use with custom or hardscape block applications
- Black powder-coated finish
- 4" H x 9.5" W x 3" D

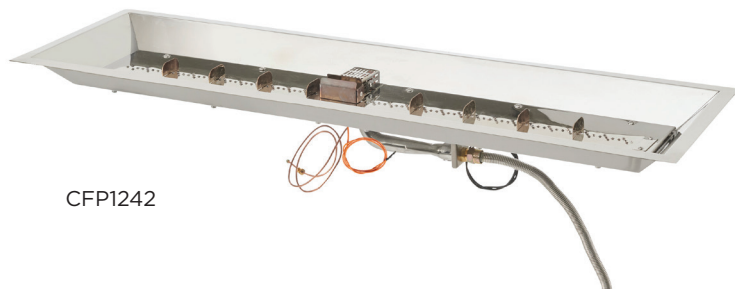
Crystal Fire^{PLUS} burner specifications



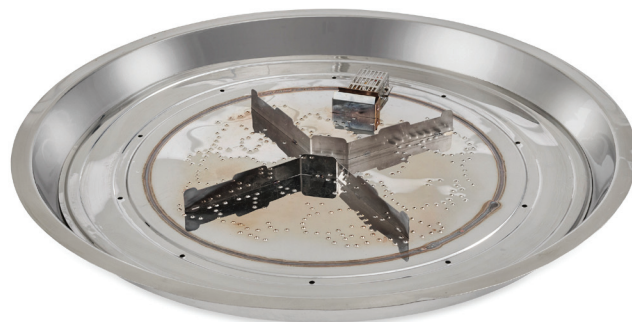
CFP20



CFP1264



CFP1242



CFP30

ROUND

BURNER NAME	MODEL #	DEPTH	DIAMETER	WEIGHT	MAX BTU's LP/NG	FIRE MEDIA***
12" Round Crystal Fire®	CF-12-DIY	4.5"	12"	4 lbs	20,000/19,500	5 lbs
20" Round Crystal Fire® Plus*	CFP20	5.39"	21.06"	10.5 lbs	73,500/77,500	10 lbs
30" Round Crystal Fire® Plus	CFP30	4.39"	32"	18.1 lbs	105,000/106,000	25 lbs
38" Round DIY Crystal Fire® Kit	DIY-38	4"	37"	32 lbs	79,500/107,500	30 lbs

SQUARE

BURNER NAME	MODEL #	DEPTH	WIDTH	LENGTH	WEIGHT	MAX BTU's LP/NG	FIRE MEDIA***
16x16" Square Pewter Crystal Fire®	CF-1616-PTR	5.65"	15.61"	15.61"	5.25 lbs	20,000/19,500	10 lbs
24x24" Square Crystal Fire®	CFP2424	4.63"	25.75"	25.75"	16 lbs	105,000/105,000	20 lbs

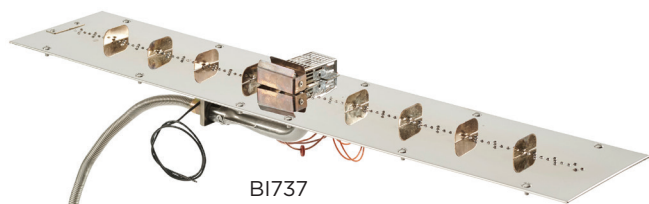
LINEAR

BURNER NAME	MODEL #	DEPTH	WIDTH	LENGTH	WEIGHT	MAX BTU's LP/NG	FIRE MEDIA***
12x24" Crystal Fire® Plus*	CFP1224	4.84"	13.5"	25.63"	9.6 lbs	75,000/75,500	10 lbs
12x42" Crystal Fire® Plus*	CFP1242	4.82"	13.5"	42.52"	14.1 lbs	100,000/100,000	15 lbs
12x64" Crystal Fire® Plus	CFP1264	4.71"	13.5"	64.3"	19.3 lbs	100,000/100,000	20 lbs
12x72" Crystal Fire® Plus	CFP1272	4.81"	13.5"	72"	22.3 lbs	125,000/125,000	25 lbs
12x84" Crystal Fire® Plus	CFP1284	4.81"	13.5"	84"	25.7 lbs	140,000/140,000	25 lbs
12x96" Crystal Fire® Plus	CFP1296	4.81"	13.5"	96"	29.1 lbs	165,000/165,000	30 lbs
12x108" Crystal Fire® Plus	CFP12108	4.81"	13.5"	108"	32.5 lbs	180,000/180,000	35 lbs
12x120" Crystal Fire® Plus	CFP12120	4.81"	13.5"	120"	35.9 lbs	200,000/200,000	40 lbs
56" Wave	WV-56-LP or WV-56-NG	13.88"	8"	55.63"	14 lbs	150,000/150,000	15 lbs

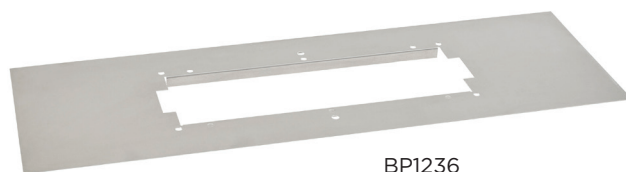
*Higher BTU output orifice available. Contact OGC for information. A Glass Wind Guard must be used if higher BTU output orifice is installed with any OGC fire table.

***Depending on your application, you may need more or less fire media than the suggested amount.

Crystal Fire^{PLUS} insert & plate specifications



BI737



BP1236

ROUND & SQUARE

BURNER NAME	MODEL #	OPTIONAL PLATE	DEPTH	WIDTH	LENGTH	WEIGHT	MAX BTU's LP/NG	FIRE MEDIA***
16" Round Crystal Fire® Plus Insert*	BI16		4.82"	15.87"	15.87"	4.9 lbs	73,500/77,500	10 lbs
<i>Round Plates</i>								
20" Round Burner Plate**		BP20RD	4.82"	20"	20"	9.8 lbs	55,000/55,000	10 lbs
24" Round Burner Plate**		BP24RD	4.82"	24"	24"	13.7 lbs	55,000/55,000	15 lbs
<i>Square Plates</i>								
24" Square Burner Plate**		BP24S	4.82"	24"	24"	10.3 lbs	55,000/55,000	25 lbs
30" Square Burner Plate**		BP30S	4.82"	30"	30"	13.3 lbs	55,000/55,000	30 lbs
28" Round Crystal Fire® Plus Insert	BI28		4.18"	28"	28"	18.5 lbs	105,000/106,000	25 lbs
<i>Round Plates</i>								
30" Round Burner Plate**		BP30RD	4.18"	30"	30"	21 lbs	106,000/105,000	25 lbs
36" Round Burner Plate**		BP36RD	4.18"	36"	36"	29.9 lbs	106,000/105,000	30 lbs
42" Round Burner Plate**		BP42RD	4.18"	42"	42"	40.4 lbs	106,000/105,000	35 lbs
48" Round Burner Plate**		BP48RD	4.18"	48"	48"	52.5 lbs	106,000/105,000	40 lbs
<i>Square Plates</i>								
36" Square Burner Plate**		BP36S	4.18"	36"	36"	27.9 lbs	106,000/105,000	35 lbs
42" Square Burner Plate**		BP42S	4.18"	42"	42"	29.9 lbs	106,000/105,000	40 lbs
19x19" Square Crystal Fire® Insert	BI1919		4.2"	19.64"	19.64"	10.4 lbs	105,000/105,000	20 lbs

LINEAR

BURNER NAME	MODEL #	OPTIONAL PLATE	DEPTH	WIDTH	LENGTH	WEIGHT	MAX BTU's LP/NG	FIRE MEDIA***
7x19" Crystal Fire® Plus Insert*	BI719		4.29"	4.42"	19.63"	5.7 lbs	75,000/75,500	10 lbs
12x24" Burner Plate**		BP1224	4.29"	12"	24"	9.3 lbs	55,000/55,000	15 lbs
12x36" Burner Plate**		BP1236	4.29"	12"	36"	11.8 lbs	55,000/55,000	20 lbs
7x37" Crystal Fire® Plus Insert*	BI737		4.27"	7.42"	36.52"	9.4 lbs	100,000/100,000	15 lbs
12x42" Burner Plate**		BP1242	4.27"	12"	42"	15.6 lbs	80,000/80,000	20 lbs
12x60" Burner Plate**		BP1260	4.24"	12"	60"	19.3 lbs	80,000/80,000	25 lbs
7x57" Crystal Fire® Plus Insert	BI757		4.15"	7.42"	57"	11.6 lbs	100,000/100,000	20 lbs
12x64" Burner Plate**		BP1264	4.15"	12"	64"	20.9 lbs	100,000/100,000	25 lbs
7x66" Crystal Fire® Plus Insert	BI766		4.25"	7.42"	66"	14.3 lbs	125,000/125,000	25 lbs
12x72" Burner Plate**		BP1272	4.25"	12"	72"	25.7 lbs	125,000/125,000	30 lbs
7x78" Crystal Fire® Plus Insert	BI778		4.25"	7.42"	78"	16.5 lbs	140,000/140,000	30 lbs
12x84" Burner Plate**		BP1284	4.25"	12"	84"	29.8 lbs	140,000/140,000	30 lbs
7x90" Crystal Fire® Plus Insert	BI790		4.25"	7.42"	90"	18.8 lbs	165,000/165,000	30 lbs
12x96" Burner Plate**		BP1296	4.25"	12"	96"	33.9 lbs	165,000/165,000	35 lbs
7x102" Crystal Fire® Plus Insert	BI7102		4.25"	7.42"	102"	21 lbs	180,000/180,000	35 lbs
12x108" Burner Plate**		BP12108	4.25"	12"	108"	38 lbs	180,000/180,000	40 lbs
7x114" Crystal Fire® Plus Insert	BI7114		4.25"	7.42"	114"	23.2 lbs	200,000/200,000	40 lbs
12x12120" Burner Plate**		BP12120	4.25"	12"	120"	42.2 lbs	200,000/200,000	45 lbs

*Higher BTU output orifice available. Contact OGC for information. A Glass Wind Guard must be used if higher BTU output orifice is installed with any OGC fire table.

**Specifications for Burner Plate include the coordinating Burner Insert installed.

***Depending on your application, you may need more or less fire media than the suggested amount.

accessory options

LAVA ROCK, FIRE GLASS, & LOGSET



Lava Rock
LAVA-BLK
20 lb bag



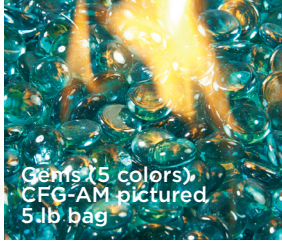
Tumbled Lava
LAV-TMB
6 lb bag



Large Diamonds (3 colors)
CFLD-B pictured
5 lb bag



Crushed Glass (2 colors)
GFC-CRUSH-C pictured
5 lb bag



Gemts (5 colors)
CFG-AM pictured
5 lb bag



Ceramic Fiber Log Set
CF20-LOG SET
Includes 6 logs and one bag LAVA-BLK

GLASS WIND GUARDS & FOLDING WIND GUARDS



Glass Wind Guard
GLASS GUARD-2424



Glass Wind Guard
GLASS GUARD-20-R

- Custom options available
- Provides protection from the wind and acts as a barrier between the user and the flame
- Enhances the beauty of the flame
- Tempered glass
- Folding Wind Guards offer the convenience of a glass wind guard and burner cover in one. Available for CFP1224 and CFP1242 models.



GLASS GUARD-1242



Folding Wind Guard
FWG-1224

CRYSTAL FIRE® PLUS BURNER FINISHES



Stainless Steel
(Standard)



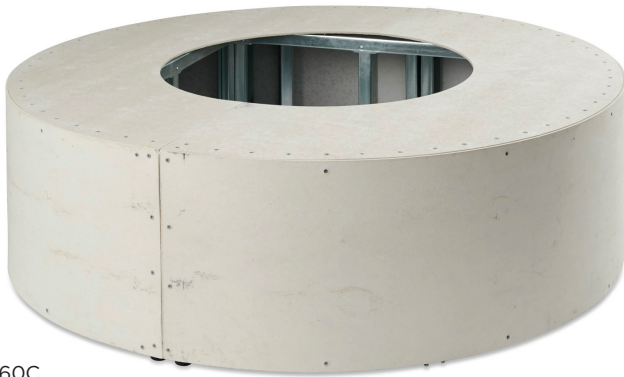
Matte Black
(Optional)



Dora Brown
(Optional)

ready-to-finish enclosures

Made in USA ready-to-finish fireplace and fire pit enclosures made from Hardiebacker® fiber cement board and commercial-grade G90 marine-grade galvanized steel framing. These enclosures can be finished on-site to match your landscaping, hardscaping, or exterior design with granite, stone, tile, Supercast™ Concrete tops, hardscape block, and more. Includes vents pre-installed and a cut out for a control panel. Custom options also available. Recommended for hardpipe natural gas or liquid propane installation. Enclosures 8' or less ship in one piece with drop-ship option available. Made in USA. For commercial and residential applications. See our Ready-to-Finish brochure or visit outdoorrooms.com for more information.



RF60C



RSTL-40DLP



RF48S

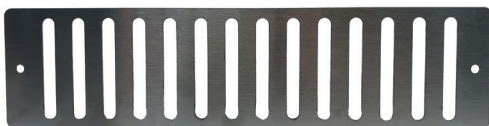


RF47L

VENT BLOCK & VENT PLATE



VENT BLOCK BLACK



21005

- Crystal Fire® Plus burners require ventilation for any DIY or field-installed application
- Vent Block (VENT BLOCK BLACK) is 4" H x 8.5" W x 4" D black powder-coated steel
- Vent Plate (21005) is 3" H x 12" W brushed stainless steel



THE OUTDOOR
GREATROOM
COMPANY

14400 Southcross Drive W • Suite 100 • Burnsville, MN 55306
Toll Free: 1.866.303.4028 • Sales@OutdoorRooms.com

OutdoorRooms.com

REV11-19