



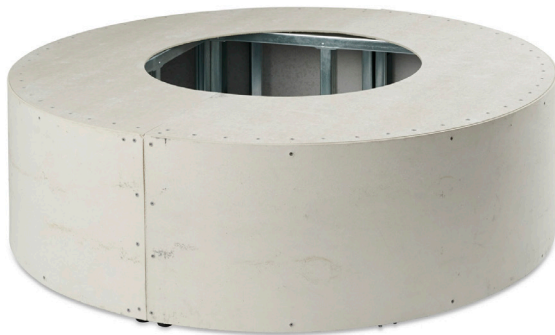
# ready-to-finish

Made in USA ready-to-finish fireplace and fire pit enclosures made from Hardiebacker® fiber cement board and commercial-grade G90 marine-grade galvanized steel framing. These enclosures can be finished on-site to match your landscaping, hardscaping, or exterior design with granite, stone, tile, Supercast™ Concrete tops, hardscape block, and more.  
For commercial and residential applications.

## ready-to-finish enclosures

### FIRE PIT BASES

- G90 marine-grade galvanized steel framing, Hardiebacker® fiber cement board
- Time-saver for installation
- Includes 2 vents pre-installed and a cut-out for a control panel (controls sold separately).
- Most do not include access door. Select models will fit Supercast™ top (not included) and include access door for 20 lb LP tank (indicated in chart to right.)
- Crystal Fire® Plus burner sold separately
- Recommended for hardpiped natural gas or liquid propane installation
- Ships in one piece with drop-ship option available
- Custom options available - contact to order
- Custom enclosures for use with Direct Spark Ignition (electronic ignition) must be at least 13" tall for use with round burners, and 16" tall for use with linear or square burners
- Ready-to-finish side table LP tank cover also available
- Made in USA



RF60C



RF48S

### FIREPLACES

- G90 marine-grade galvanized steel framing, Hardiebacker® fiber cement board
- Fireplace opening enclosure is lined with #304 stainless steel
- Time-saver for installation
- Includes vents pre-installed, a cut-out for a control panel, and glass wind guard panels
- Includes UL & ULC listed Crystal Fire® Plus Burner Insert & ignition controls
- Tempered fire glass media or lava rock sold separately
- Additional control options sold separately
- 40" and 60" models include access door for LP
- Recommended for hardpiped natural gas or liquid propane installation
- Enclosures 8' or less ship in one piece with drop-ship option available
- Custom options available - contact to order
- Made in USA



RSTL-40DLP



RF47L

# ready-to-finish fire pit base enclosures

NAME	MODEL #	FITS BURNER #**	HEIGHT	LENGTH	DEPTH	WEIGHT
36" Round Ready-to-Finish Base*	RF36C	CFP20	21"	36"	36"	70 lbs
48" Round Ready-to-Finish Base	RF48C	CFP20	18"	48"	48"	82 lbs
60" Round Ready-to-Finish Base	RF60C	CFP30	18"	60"	60"	109 lbs
72" Round Ready-to-Finish Base	RF72C	CFP30	18"	72"	72"	142 lbs
26x26" Square Ready-to-Finish Base*	RF26S	CF-2424-DIY	22"	26"	26"	35 lbs
48x48" Square Ready-to-Finish Base	RF48S	CF-2424-DIY	18"	48"	48"	110 lbs
60x60" Square Ready-to-Finish Base	RF60S	CF-2424-DIY	18"	60"	60"	151 lbs
72x72" Square Ready-to-Finish Base	RF72S	CF-2424-DIY	18"	72"	72"	200 lbs
26x32" Linear Ready-to-Finish Base*	RF32L	CFP1224	20.75"	32.5"	26"	38 lbs
18x47" Linear Ready-to-Finish Base*	RF47L	CFP1242	22.75"	46.75"	18.5"	70 lbs
48x36" Linear Ready-to-Finish Base	RF48L	CFP1242	18"	48"	36"	100 lbs
60x36" Linear Ready-to-Finish Base	RF60L	CFP1242	18"	60"	36"	113 lbs
72x36" Linear Ready-to-Finish Base	RF72L	CFP1264	18"	72"	36"	126 lbs
84x36" Linear Ready-to-Finish Base	RF84L	CFP1272	18"	84"	36"	143 lbs
96x36" Linear Ready-to-Finish Base	RF96L	CFP1284	18"	96"	36"	160 lbs
108x36" Linear Ready-to-Finish Base	RF108L	CFP1296	18"	108"	36"	175 lbs
120x36" Linear Ready-to-Finish Base	RF120L	CFP12108	18"	120"	36"	200 lbs
132x36" Linear Ready-to-Finish Base	RF132L	CFP12120	18"	132"	36"	225 lbs

\*Fits 20 lb. LP tank in base, use with Supercast™ table top

\*\*Burner and controls sold separately

# ready-to-finish fireplace enclosures

## SINGLE-SIDED OPENING

NAME	MODEL #	INCLUDES BURNER #	HEIGHT	WIDTH	DEPTH	VIEWING AREA	WEIGHT
<b>Manual Ignition</b>							
40" Ready-to-Finish Linear	RLFP-40DNG or RLFP-40DLP	BI737	48"	72"	18"	40"W x 20"H	218 lbs
40" Ready-to-Finish Tall Linear	RLFP-40TDNG or RLFP-40TDLP	BI737	48"	72"	18"	40"W x 20"H	228 lbs
<b>Direct Spark Ignition</b>							
40" Ready-to-Finish Linear	RLFP-40DNG or RLFP-40DLP	BI737	48"	72"	18"	40"W x 20"H	225 lbs
40" Ready-to-Finish Tall Linear	RLFP-40TDNG or RLFP-40TDLP	BI737	60"	72"	18"	40"W x 20 H	235 lbs
60" Ready-to-Finish Linear	RLFP-60DNG or RLFP-60DLP	BI757	48"	92"	18"	60"W x 20"H	242 lbs
72" Ready-to-Finish Linear	RLFP-72DNG or RLFP-72DLP	BI766	48"	108"	18"	72"W x 20"H	267 lbs
84" Ready-to-Finish Linear	RLFP-84DNG or RLFP-84DLP	BI778	48"	120"	18"	84"W x 20"H	309 lbs
96" Ready-to-Finish Linear	RLFP-96DNG or RLFP-96DLP	BI790	48"	132"	18"	96"W x 20"H	345 lbs
108" Ready-to-Finish Linear	RLFP-108DNG or RLFP-108DLP	BI7102	48"	144"	18"	108"W x 20"H	395 lbs
120" Ready-to-Finish Linear	RLFP-120DNG or RLFP-120DLP	BI7114	48"	156"	18"	120"W x 20"H	428 lbs

## SEE-THROUGH OPENING

NAME	MODEL #	INCLUDES BURNER #	HEIGHT	WIDTH	DEPTH	VIEWING AREA	WEIGHT
<b>Manual Ignition</b>							
40" Ready-to-Finish See-Through	RSTL-40MNG or RSTL-40MLP	BI737	48"	72"	18"	10"W x 20"H	213 lbs
40" Ready-to-Finish Tall See-Through	RSTL-40TMNG or RSTL-40TMLP	BI737	60"	72"	18"	10"W x 20"H	223 lbs
<b>Direct Spark Ignition</b>							
40" Ready-to-Finish See-Through	RSTL-40DNG or RSTL-40DLP	BI737	48"	72"	18"	40"W x 20"H	220 lbs
40" Ready-to-Finish Tall See-Through	RSTL-40TDNG or RSTL-40TDLP	BI737	60"	72"	18"	40"W x 20 H	230 lbs
60" Ready-to-Finish See-Through	RSTL-60DNG or RSTL-60DLP	BI757	48"	92"	18"	60"W x 20"H	237 lbs
72" Ready-to-Finish See-Through	RSTL-72DNG or RSTL-72DLP	BI766	48"	108"	18"	72"W x 20"H	262 lbs
84" Ready-to-Finish See-Through	RSTL-84DNG or RSTL-84DLP	BI778	48"	120"	18"	84"W x 20"H	304 lbs
96" Ready-to-Finish See-Through	RSTL-96DNG or RSTL-96DLP	BI790	48"	132"	18"	96"W x 20"H	340 lbs
108" Ready-to-Finish See-Through	RSTL-108DNG or RSTL-108DLP	BI7102	48"	144"	18"	108"W x 20"H	390 lbs
120" Ready-to-Finish See-Through	RSTL-120DNG or RSTL-120DLP	BI7114	48"	156"	18"	120"W x 20"H	423 lbs